

Toolbox Safety Series
Safe Use of Power Nailers and Staplers



SESSION THREE
WARNING LABELS AND SYMBOLS



LEGAL NOTICE AND DISCLAIMER

The Toolbox Safety Series (the “Toolbox”) is published by the ISANTA Power Tool Safety Alliance, ISANTA, and the other members of the Alliance (collectively, the “Alliance”) for educational and informational purposes only and is intended solely to serve as a resource to individuals. The Alliance is not undertaking to render specific professional advice. The Alliance does not “approve” or “endorse” any specific products, manufacturers, methods, processes, practices, or sources of information. The Toolbox should not be referenced in any way that would imply such approval or endorsement.

The information and data contained in the Toolbox have been obtained from sources believed to be reliable. However, the various codes, regulations, standards, and practices referenced in the Toolbox are subject to change, and the Toolbox is current only as of its original publication date.

The Alliance makes no guarantee, representation, or warranty, expressed or implied, at law or in equity, and expressly disclaims any and all such guarantees, representations, or warranties whatsoever as to the validity, accuracy, or sufficiency of the information set forth in the Toolbox and assumes no responsibility or liability in connection therewith. The Alliance assumes no liability or responsibility in connection with the use or misuse of the Toolbox or information included therein.

By using the Toolbox, the user acknowledges and accepts the foregoing limitation of liability and disclaimers and agrees that the Alliance and its individual members are not responsible for injuries, claims, losses, or damages to the user or third parties arising, directly or indirectly, out of the user’s use of the Toolbox and/or the information contained therein.

SAFETY IS EVERYONE'S RESPONSIBILITY.

Tool users must

- choose the correct tool to perform the task
- read and understand the owner's manual
- work in a safe manner
- maintain tools according to the manufacturer's requirements.

Employers must ensure

- the employee uses the correct tool for the intended work task
- the tool is in good working condition
- the employee has read and understands the manufacturer's instructions and has been properly trained on the tool's use
- the employee uses the appropriate personal protective equipment (PPE).

Coworkers must

- alert others in their surroundings of potential hazards associated with tool use
- use appropriate PPE
- ensure that proper training for tool use has been conducted.

This Toolbox series provides both owners and users of nailers and staplers with some basic information on the safe use of their tools.

ANSI standard SNT-101, ISO standard 11148 Part 13, OSHA standards, manufacturer's instructions and recommendations, safety and construction practices, and recommendations were used to develop this Toolbox Safety Series.

TOPICS FROM PREVIOUS SESSIONS

Session 1: Choose the Correct Tool for the Job


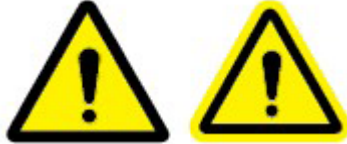
Session 2: Read and Understand All Safety, Use, and Maintenance Instructions

WARNING AND SAFETY LABELS



These basic warning labels are included in the safety instructions of many manuals and on the housing of many tools. The actual symbols intended to convey the same common meaning might vary by manufacturer.

Safety alert symbols



These are symbols alerting you to potential physical injury hazards. Follow all safety messages and symbols to avoid possible injury or death.

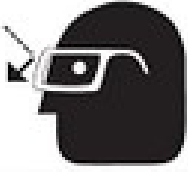
| Caution | Danger, Caution, or Warning |
|---|--|
|  |  |
| <p><i>Symbols from ANSI Z535.4-2011, Criteria for Safety Symbols</i></p> | |

Keep hands and other body parts away from tool contact point to avoid accidentally driving a fastener into your body.

| | |
|---|--|
|  <p>Personal Injury</p> |  |
| <p><i>Symbol from ANSI SNT-101</i></p> | <p><i>Symbol from ISO 11148 Part 13</i></p> |

Wear eye protection.

| | |
|---|---|
|  |  |
| <p><i>Symbol from ANSI SNT-101</i></p> | <p><i>Symbol from ISO 11148 Part 13</i></p> |



A variety of other approved symbols may be used.

Wear hearing protection.

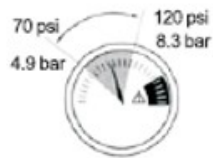


Symbol from ISO 11148 Part 13

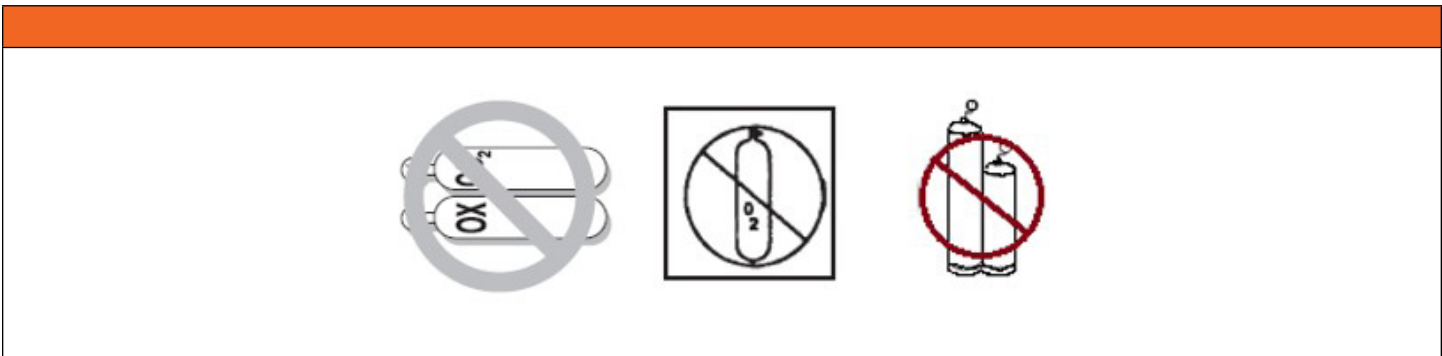


A variety of other approved symbols may be used.

Do not exceed tool operating air pressure.



Never use bottled or flammable gas to operate the tool.



The following represent labels that would be on a tool. Size and shape will vary based on the tool's size or space availability.

WARNING

- 1 Read and understand tool labels and manual. Failure to follow warnings could result in DEATH or SERIOUS INJURY
- 2 Operators and others in work area MUST wear safety glasses with side shields.
- 3 Keep fingers AWAY from trigger when not driving fasteners to avoid accidental discharge.
- 4 Know and understand what trigger system you are using. Check manual for triggering options.
- 5 NEVER point tool at yourself or others in work area.
- 6 Never use oxygen or other bottle gasses. Explosion may occur.

WARNING

1. Read and understand tool labels and manual. Failure to follow warnings could result in DEATH or SERIOUS INJURY.
2. Operators and others in work area MUST wear safety glasses with side shields.
3. Keep fingers AWAY from trigger when not driving fasteners to avoid accidental discharge.
4. Know and understand what trigger system you are using. Check manual for triggering options.
5. NEVER point tool at yourself or others in work area.
6. Never use oxygen or other bottle gasses. Explosion may occur.

| | MIN | MAX | | | MIN | MAX | | |
|--|-----|-----|-----|----------|--------|---------|-----------|-------------|
| Model XXXX | 60 | 100 | PSI | Fastener | 1/4" | 5/8" | Gauge / Ø | 22.7 mm |
| Ser. No. <input style="width: 80px;" type="text"/> | 4.1 | 6.9 | BAR | Length: | 6.4 mm | 15.9 mm | → ⌒ ← | 3/8" 9.5 mm |
| Company Name, Location, Country of Manufacture | | | | | | | | |

QUIZ

This quiz may have multiple correct answers. Its purpose is to be the first step in a discussion with your supervisor/foreman and fellow workers in regard to power-fastening-tool safety. Please discuss these questions as a group with your co-workers and supervisor/foreman.

1. You are new on the job and have been handed a tool with the following damaged warning label.

WARNING

1. Read and understand tool labels and manual. Failure to follow warnings could result in DEATH or SERIOUS INJURY. 2. Operators and others in work area MUST wear safety glasses with side shields. 3. Keep fingers AWAY from trigger when not driving fasteners to avoid accidental discharge. 4. Know and understand what trigger system you are using. Check manual for triggering options. 5. NEVER point tool at yourself or others in work area. 6. Never use oxygen or other bottle gasses. Explosion may occur.

Model RZ127
Ser. No. X12433

| | | |
|--------------------|--------|-----------|
| Operating Pressure | MIN 60 | MAX 101.6 |
| | 4.1 | |

Your Tool Co. - C

| | |
|-----|-----|
| MIN | MAX |
| 2" | 4" |

| | |
|----------|------------------|
| Diameter | 0.113" to 0.135" |
| | 2.87 to 3.42 mm |

A. What should you do?

B. Why?

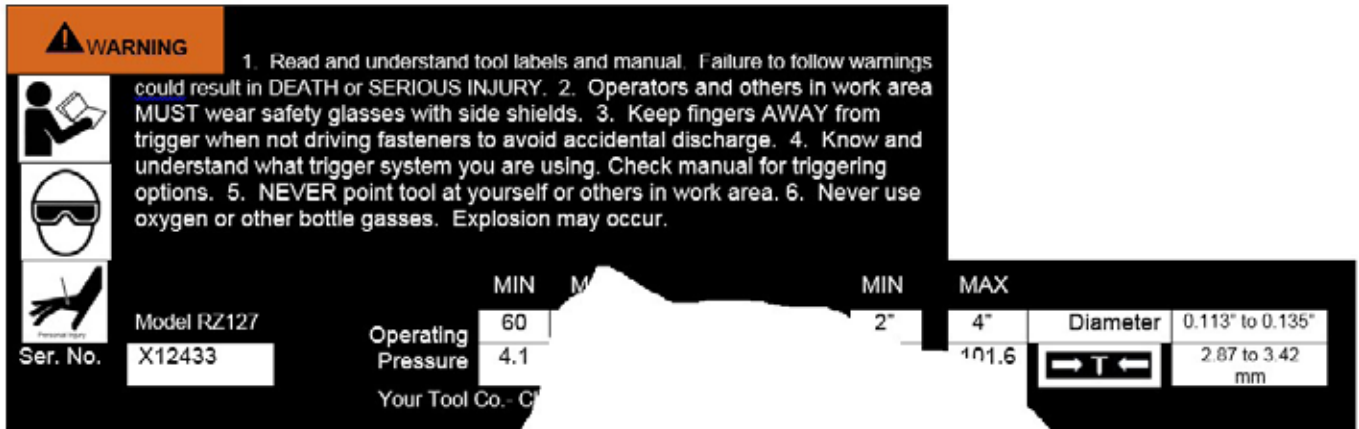
C. What does this symbol mean?



ANSWER KEY

This quiz may have multiple correct answers. Its purpose is to be the first step in a discussion with your supervisor/foreman and fellow workers in regard to power-fastening-tool safety. Please discuss these questions as a group with your co-workers and supervisor/foreman.

1. You are new on the job and have been handed a tool with the following damaged warning label.



A. What should you do?

Possible answers: Check the tool for damage. Consult the owner's manual to determine max operating pressure.

B. Why?

Answer: Exceeding maximum pressure could result in injury. Other damage to the tool could exist, putting workers at risk of injury.

C. What does this symbol mean?



Answer: Keep your hand away.

THE FOLLOWING ORGANIZATIONS MAKE UP THE TOOL SAFETY ALLIANCE



Tool Members

| | | | | |
|---|---|---|---|--|
| <p>KOKI HOLDINGS AMERICA LTD. Metabo HPT Brand</p> | <p>PEACE INDUSTRIES SPOTNAILS Brand</p> | <p>TECHTRONIC INDUSTRIES NA Milwaukee Tool Brand Rigid Brand</p> | <p>STANLEY BLACK & DECKER Bostitch Brand DeWalt Brand Porter-Cable Brand Craftsman Brand</p> | <p>BECK AMERICA FASCO TOOLS RAINCO TOOLS</p> |
| <p>JAACO CORPORATION NailPro Brand</p> | <p>MAX USA CORP. MAX Brand</p> | <p>MAKITA USA Makita Brand</p> | <p>ILLINOIS TOOL WORKS Paslode Brand Duo-Fast Brand</p> | <p>KYOCERA SENCO INDUSTRIAL TOOLS Senco Brand</p> |
| | <p>MID-CONTINENT STEEL & WIRE Magnum Brand</p> | <p>PRIME SOURCE BUILDING PRODUCTS Grip-Rite Brand</p> | <p>NATIONAL NAIL CORP. Stinger Brand</p> | |

Alliance Industry Partners

| | | | |
|--|--|--|---|
| <p>UNITED UNION OF ROOFERS, WATERPROOFERS, AND ALLIED WORKERS</p> | <p>NATIONAL ROOFING CONTRACTORS ASSOCIATION</p> | <p>NATIONAL FRAMERS COUNCIL</p> | <p>CHICAGO REGIONAL COUNCIL CARPENTERS UNION</p> |
|--|--|--|---|